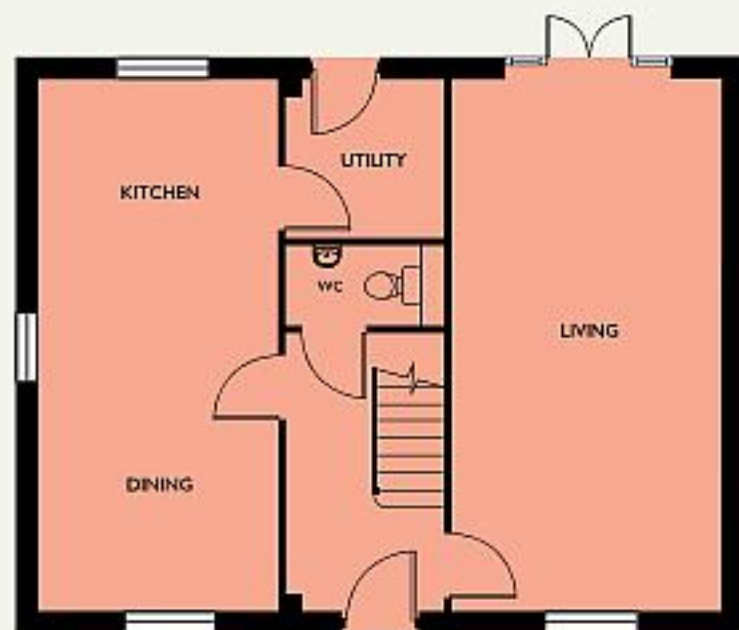
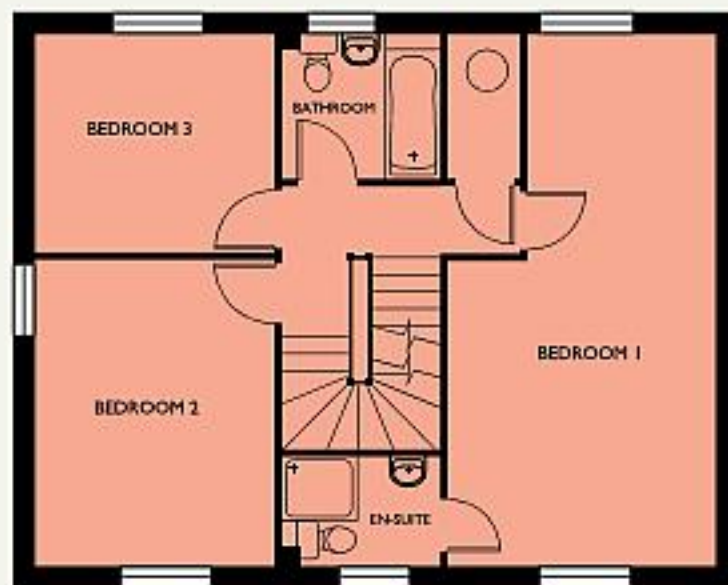


Blenheim 3

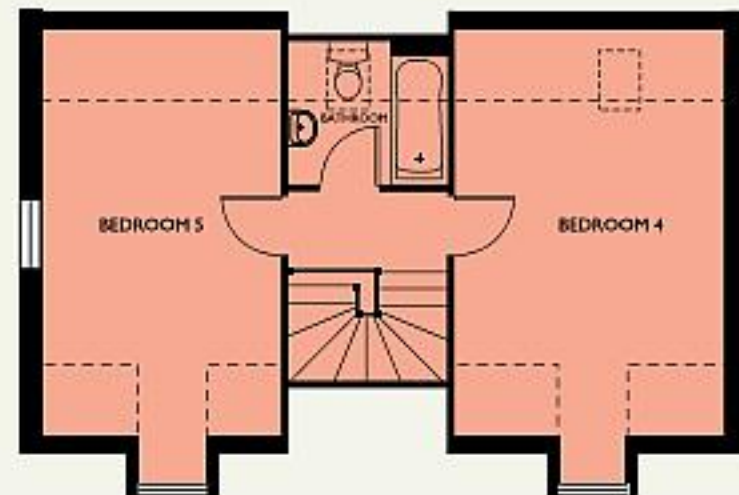
Plots 13, 36, 63



GROUND FLOOR



FIRST FLOOR



SECOND FLOOR

Living Room	6950 x 3500	22'10" x 11'6"
Kitchen/Dining	6950 x 3100 (max)	22'10" x 10'2" (max)
Utility Room	2050 x 2050	6'9" x 6'9"
Bedroom 1	6950 (max) x 3500 (max)	22'10" (max) x 11'6" (max)
Bedroom 2	4000 x 3100	13'1" x 10'2"
Bedroom 3	3100 x 2825	10'2" x 9'3"
Bedroom 4	5400+Bay x 3500	17'9"+Bay x 11'6"
Bedroom 5	5400+Bay x 3100	17'9"+Bay x 10'2"