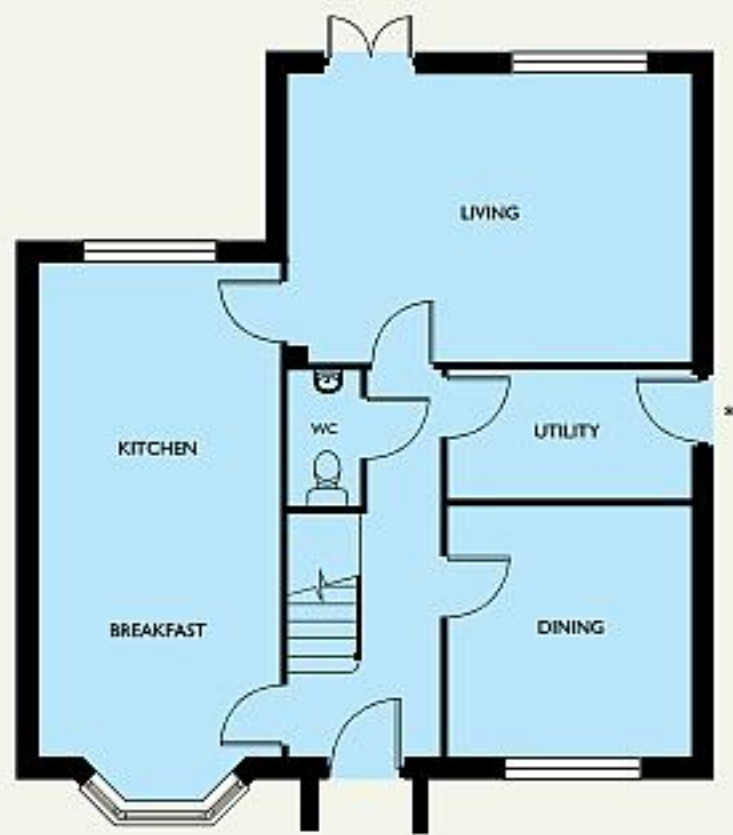


Gorham

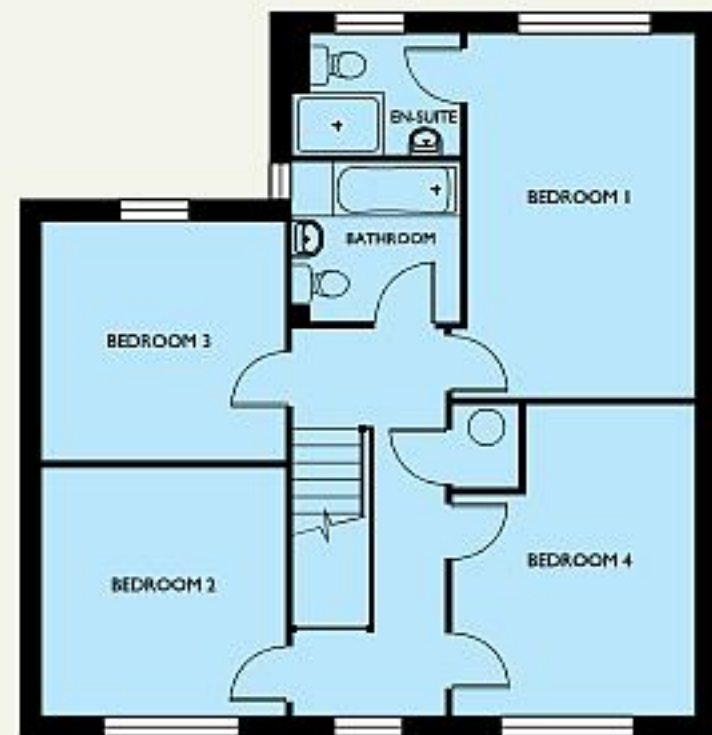
Plots 5, 55, 62

Living Room	5250 x 3750	17'3" x 12'4"
Dining Room	3250 x 3150	10'8" x 10'4"
Kitchen/Breakfast	6450+Bay x 3150	21'2"+Bay x 10'4"
Utility Room	3150 x 1650	10'4" x 5'5"
Bedroom 1	4775 x 2950	15'8" x 9'8"
Bedroom 2	3225 x 3175	10'7" x 10'5"
Bedroom 3	3175 x 3100	10'5" x 10'2"
Bedroom 4	4050 (max) x 3150 (max)	13'3" (max) x 10'4" (max)

* Utility room door to plots 55 & 62 only.



GROUND FLOOR



FIRST FLOOR