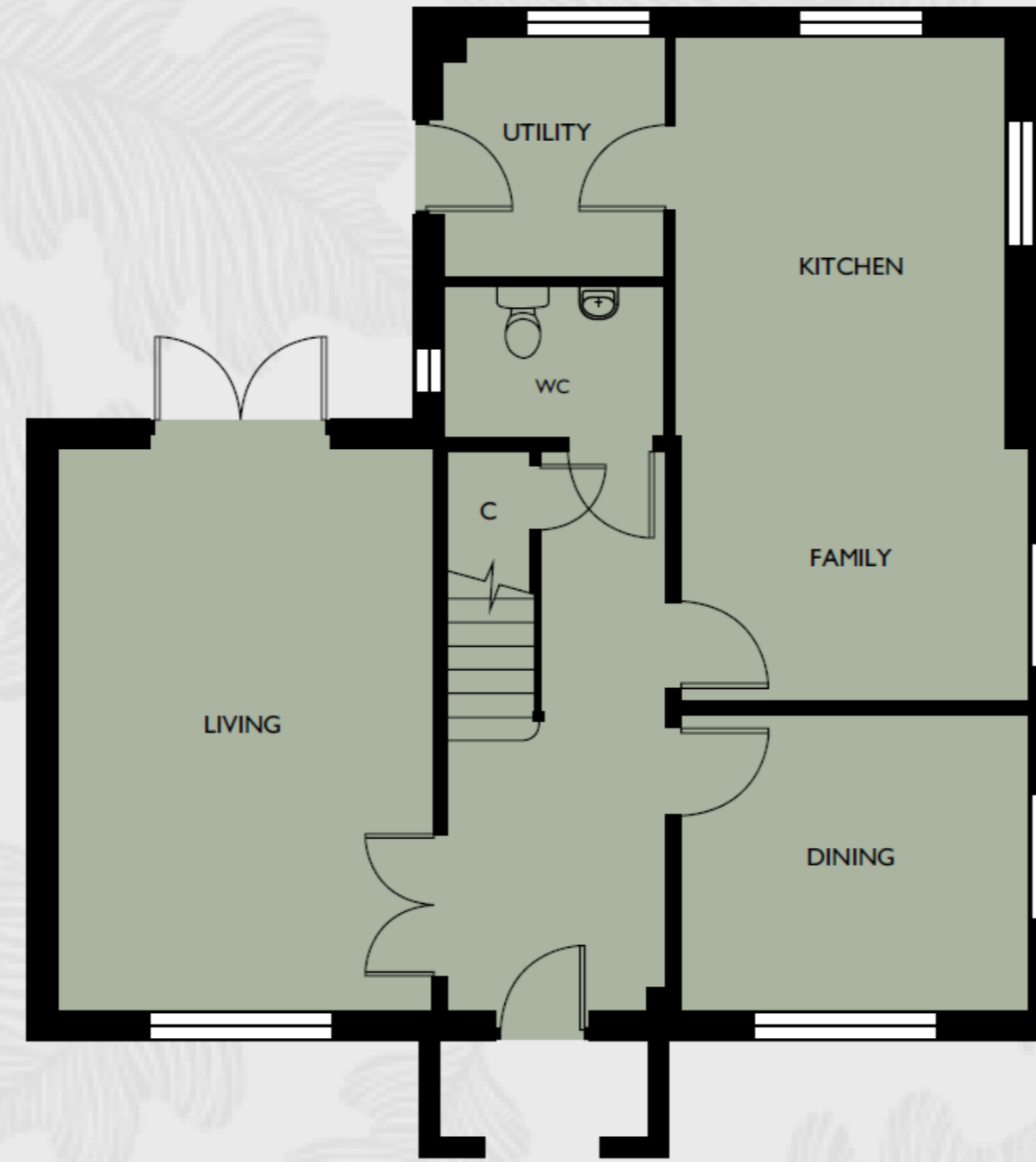


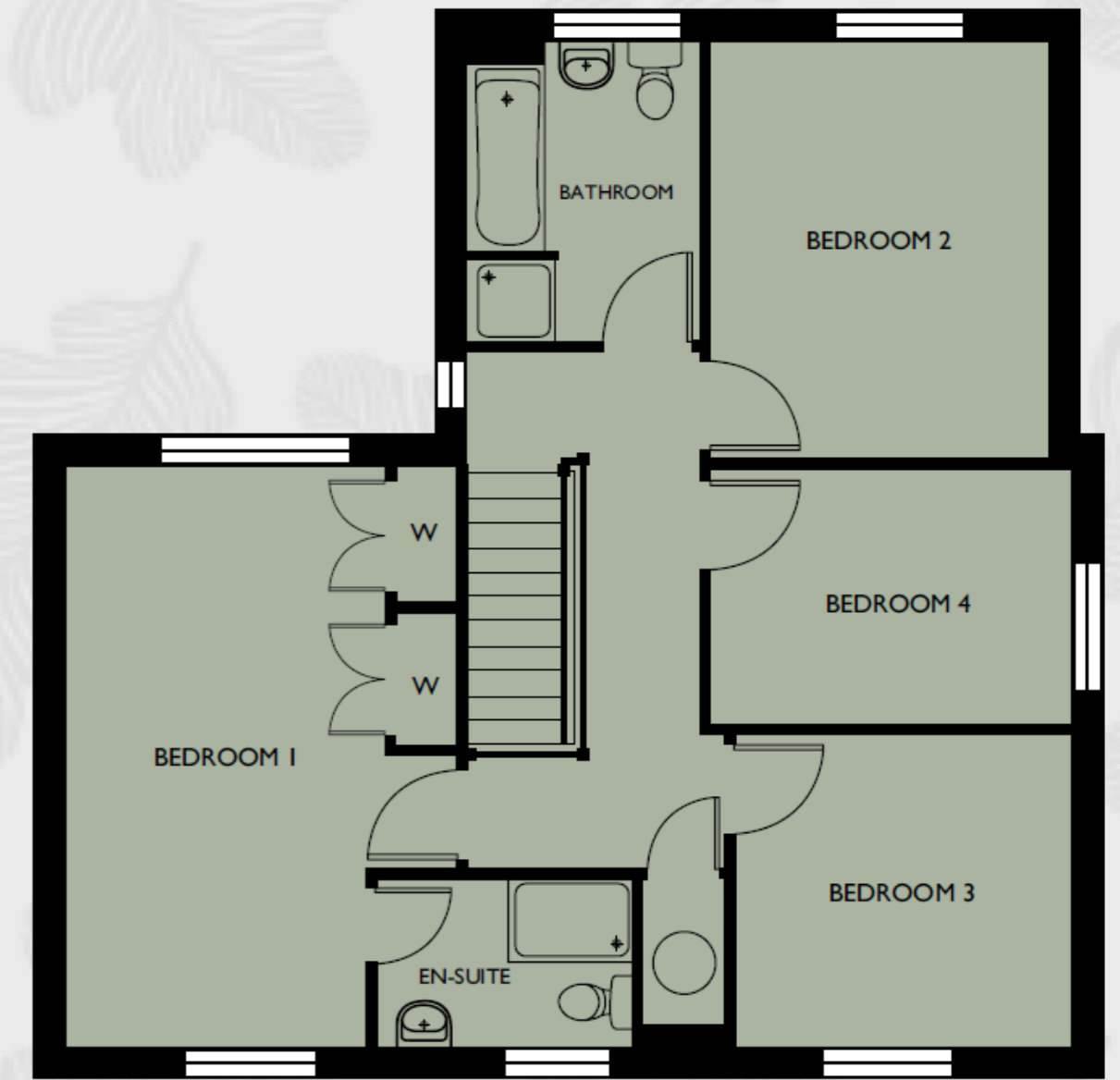
Sedlescombe

Plots 53, 57, 66

Living Room	5475 x 3675	18'0" x 12'1"
Dining Room	3400 x 2875	11'2" x 9'5"
Kitchen/Family	6500 x 3400 (max)	21'4" x 11'2" (max)
Utility	2300 x 2150	7'7" x 7'1"
Bedroom 1	5475 x 3000	18'0" x 9'10"
Bedroom 2	3950 x 3175	13'0" x 10'5"
Bedroom 3	3175 x 2950	10'5" x 9'8"
Bedroom 4	3175 x 2425	10'5" x 7'11"



GROUND FLOOR



FIRST FLOOR