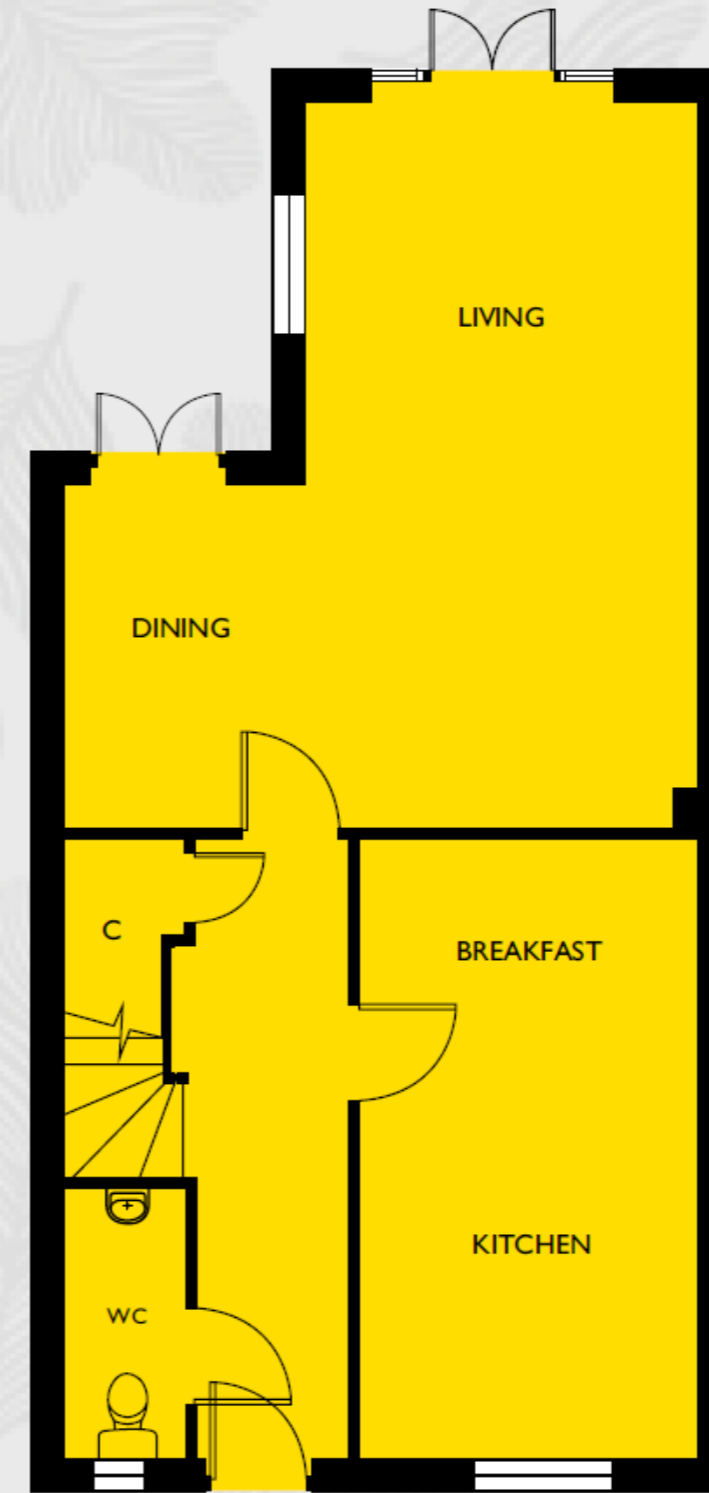


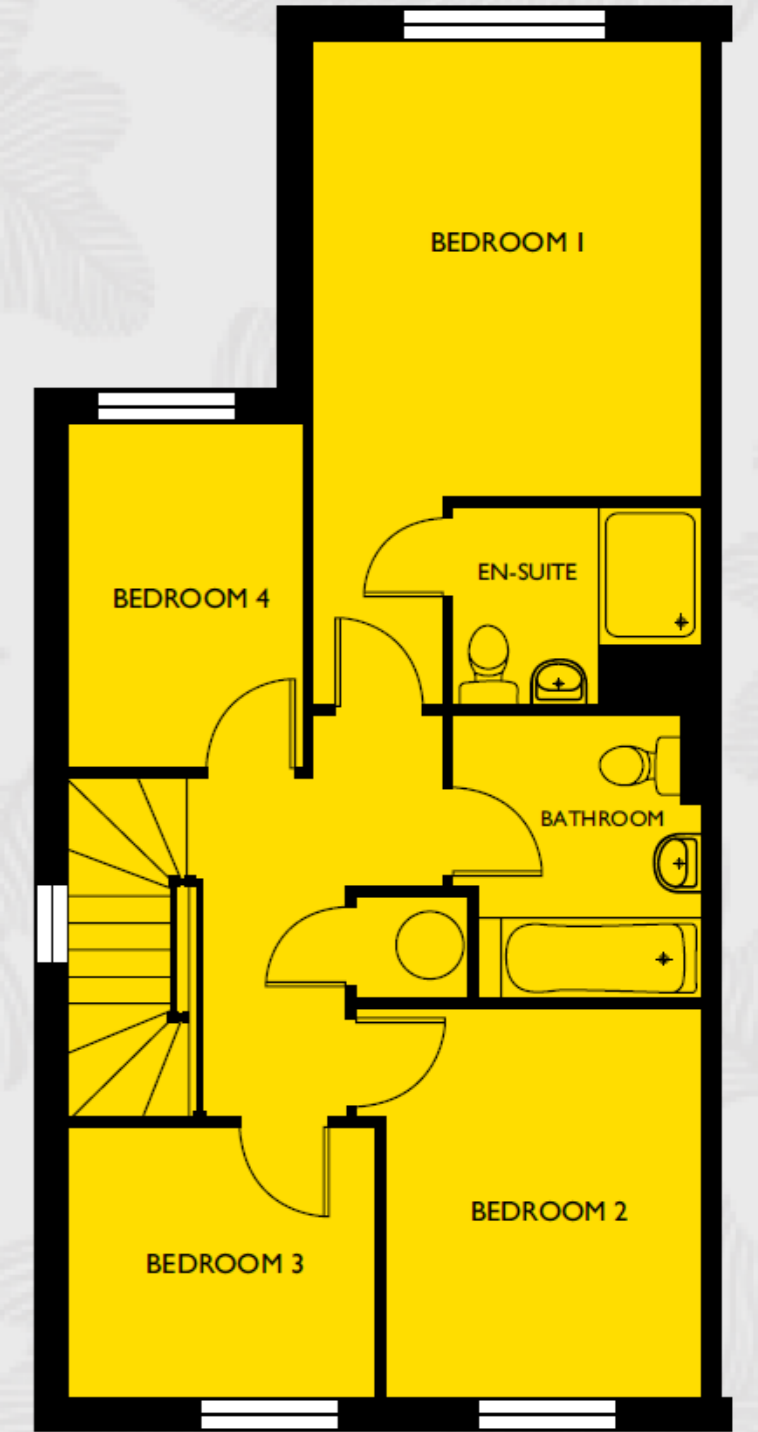
Buxted V1 & V2

Plots 17, 18, 20, 21, 54, 55, 79, 80, 104, 105

Living/Dining	6350 (max) x 5550 (max)	20'10" (max) x 18'3" (max)
Kitchen/Breakfast	5400 x 2950	17'9" x 9'8"
Bedroom 1	3975 (min) x 3400	13'0" (min) x 11'2"
Bedroom 2	3400 x 2775	11'2" x 9'1"
Bedroom 3	2650 x 2350	8'8" x 7'9"
Bedroom 4	3000 x 2050	9'10" x 6'9"



GROUND FLOOR



FIRST FLOOR