

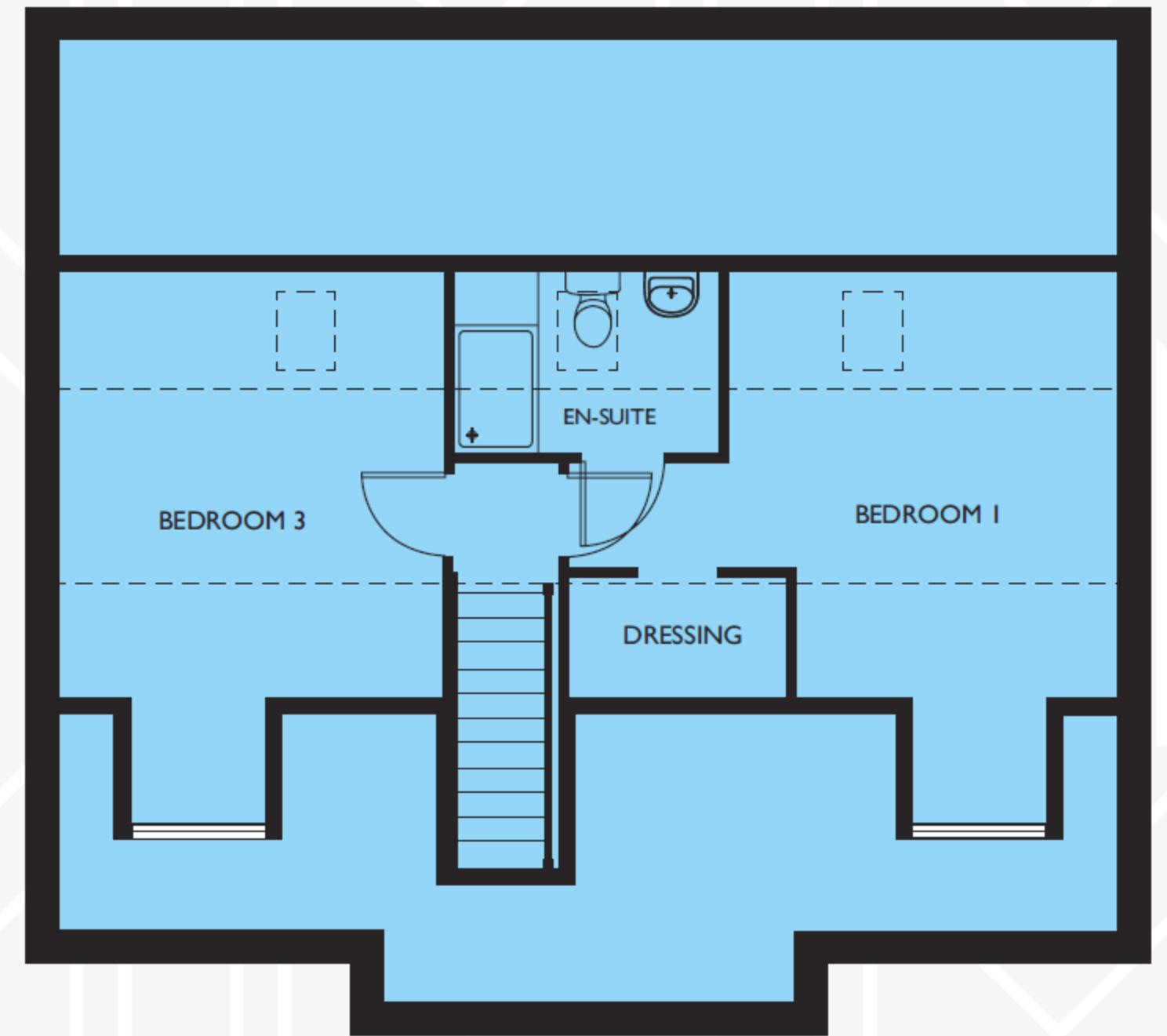
WESTCOT

Plots 20, 21 and 22

Living Room	4275 x 3275	14'0" x 10'9"
Kitchen	3975 x 3500	13'0" x 11'6"
Dining Area	4300 x 3000	14'1" x 9'10"
Bedroom 2	5725 x 3275	18'9" x 10'9"
Bedroom 1	4025 (+bay) x 3600 (min)	13'2" (+bay) x 11'10" (min)
Bedroom 3	4025 (+bay) x 3575	13'2" (+bay) x 11'9"



GROUND FLOOR



FIRST FLOOR