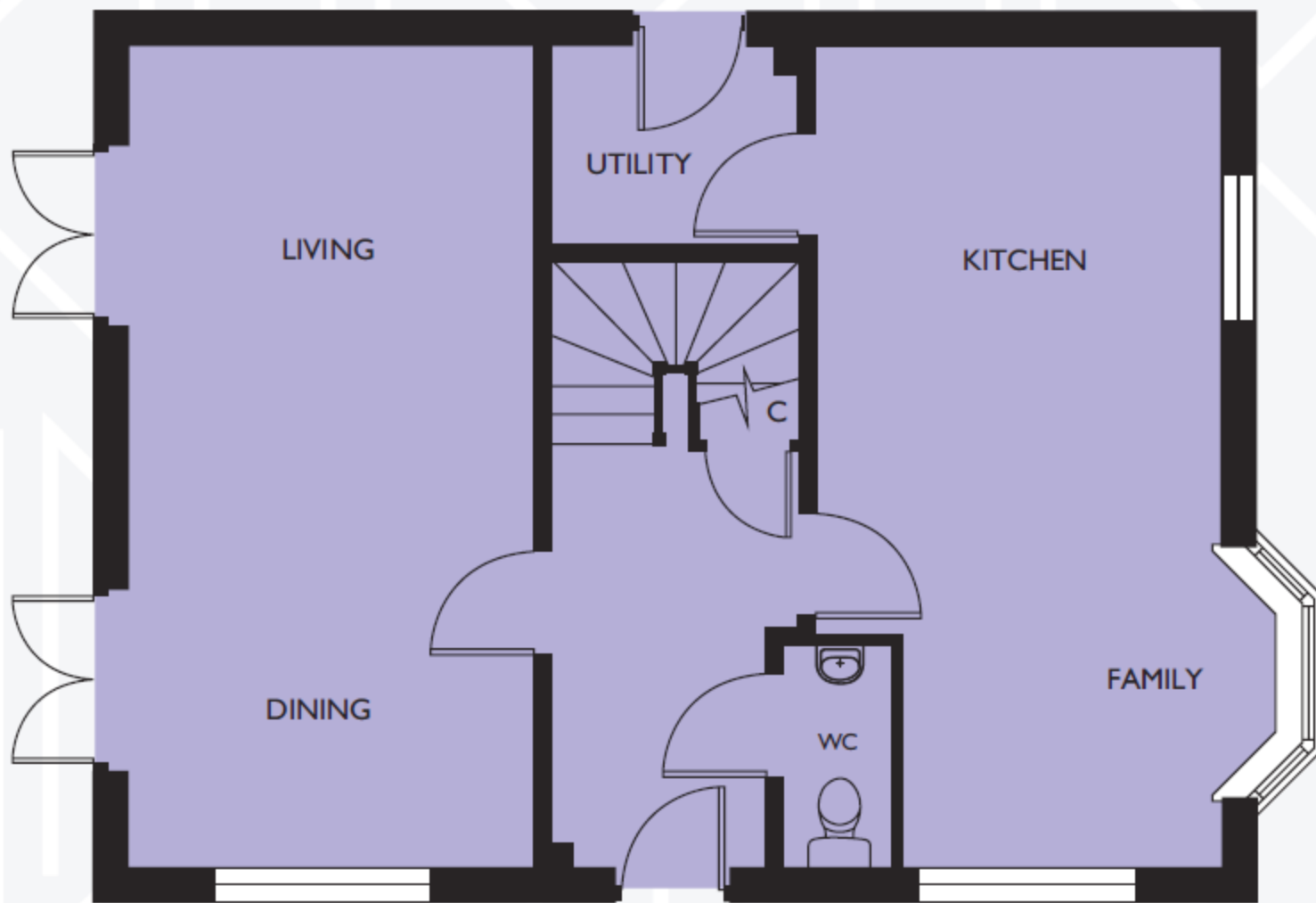
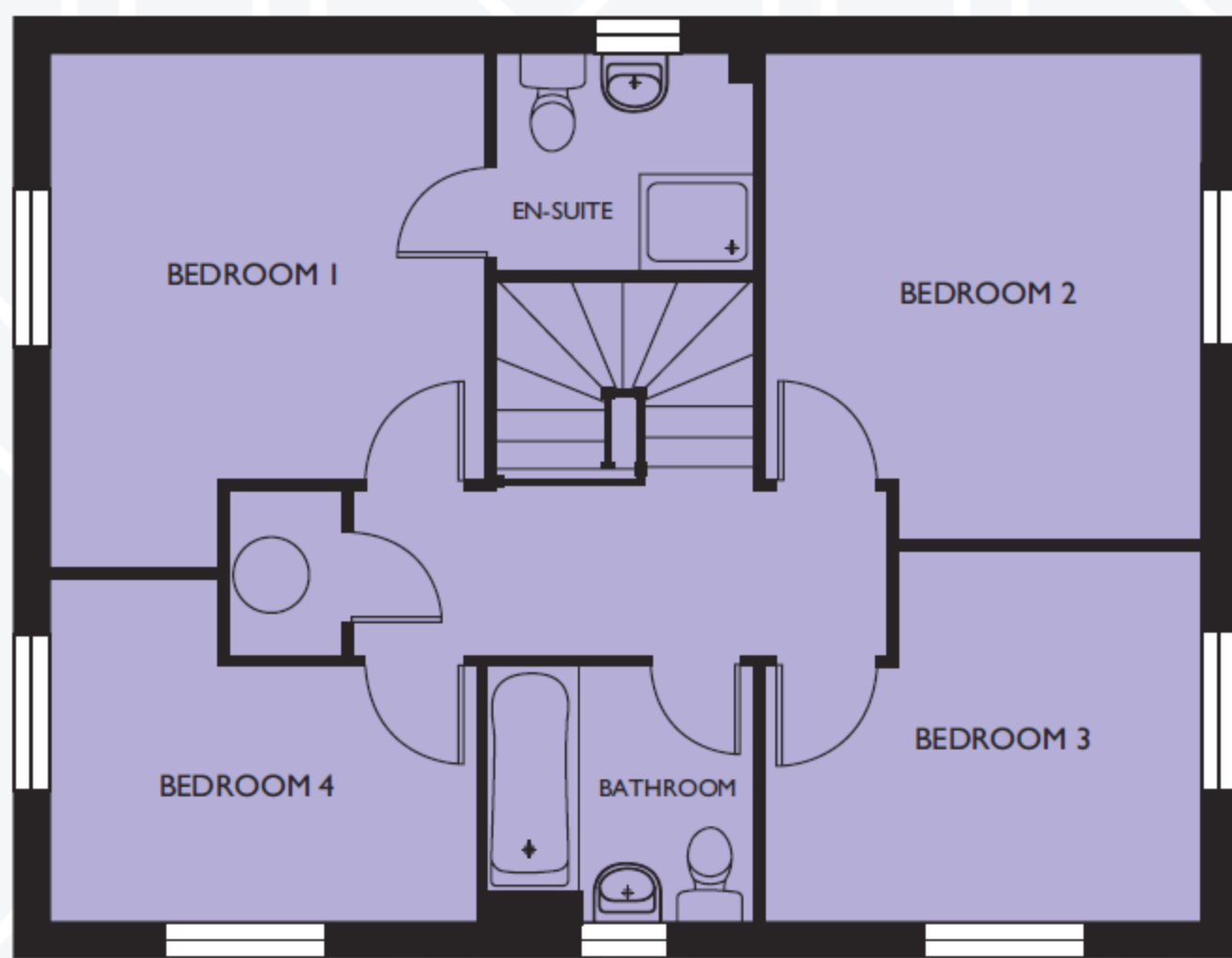


OTLEY

Plots 24 and 28



GROUND FLOOR



FIRST FLOOR

| | | |
|----------------|-------------------------|----------------------------|
| Living/Dining | 6700 x 3300 | 22'0" x 10'10" |
| Kitchen/Family | 6700 (max) x 3300 (max) | 22'0" (max) x 10'10" (max) |
| Utility Room | 2025 x 1550 | 6'8" x 5'1" |
| Bedroom 1 | 3950 (max) x 3375 (max) | 13'0" (max) x 11'1" (max) |
| Bedroom 2 | 3750 (max) x 3375 (max) | 12'4" (max) x 11'1" (max) |
| Bedroom 3 | 3375 (max) x 2850 (max) | 11'1" (max) x 9'4" (max) |
| Bedroom 4 | 3300 (max) x 2650 (max) | 10'10" (max) x 8'8" (max) |

Note: Plot 24 has brick elevations.