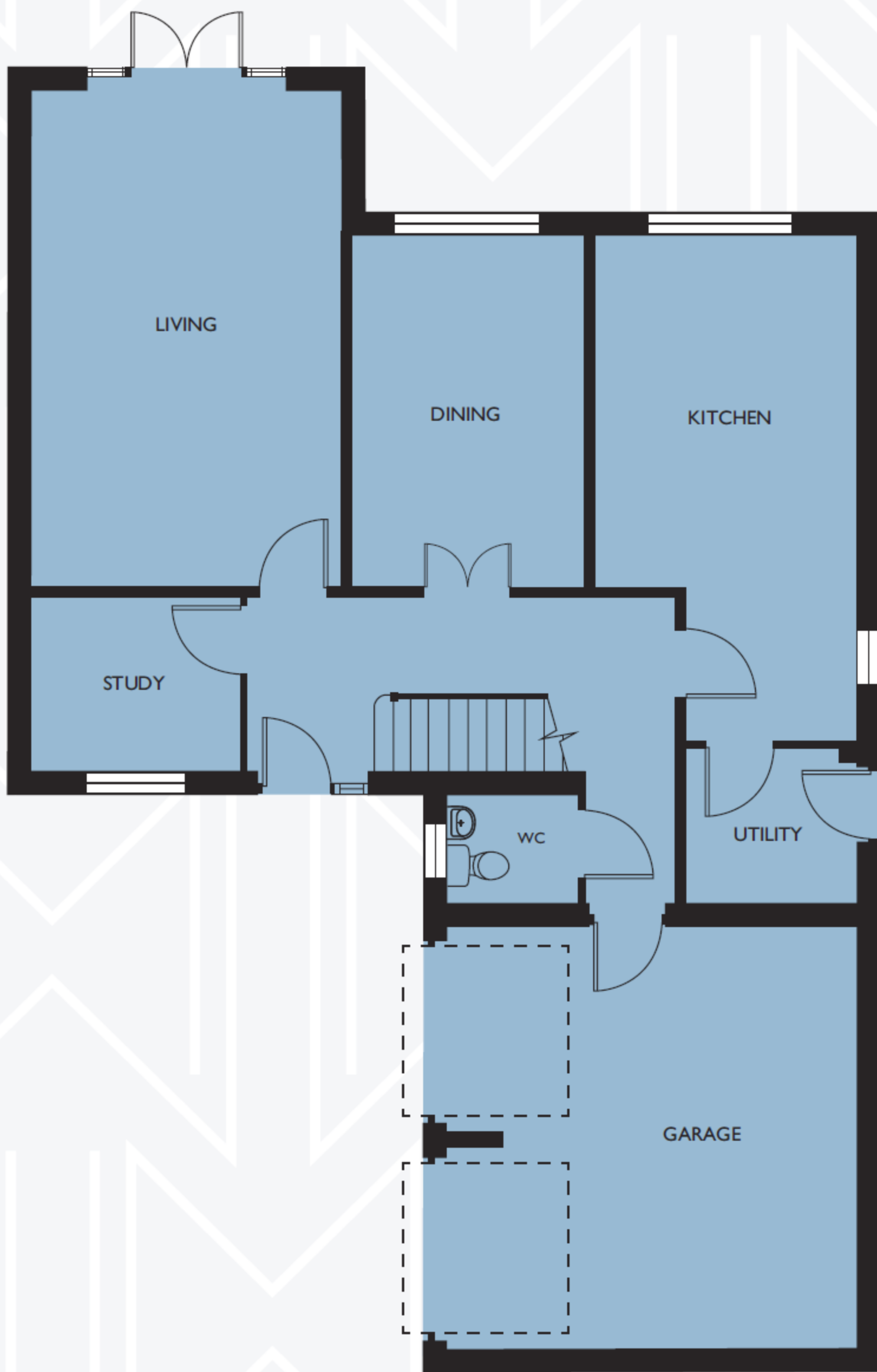
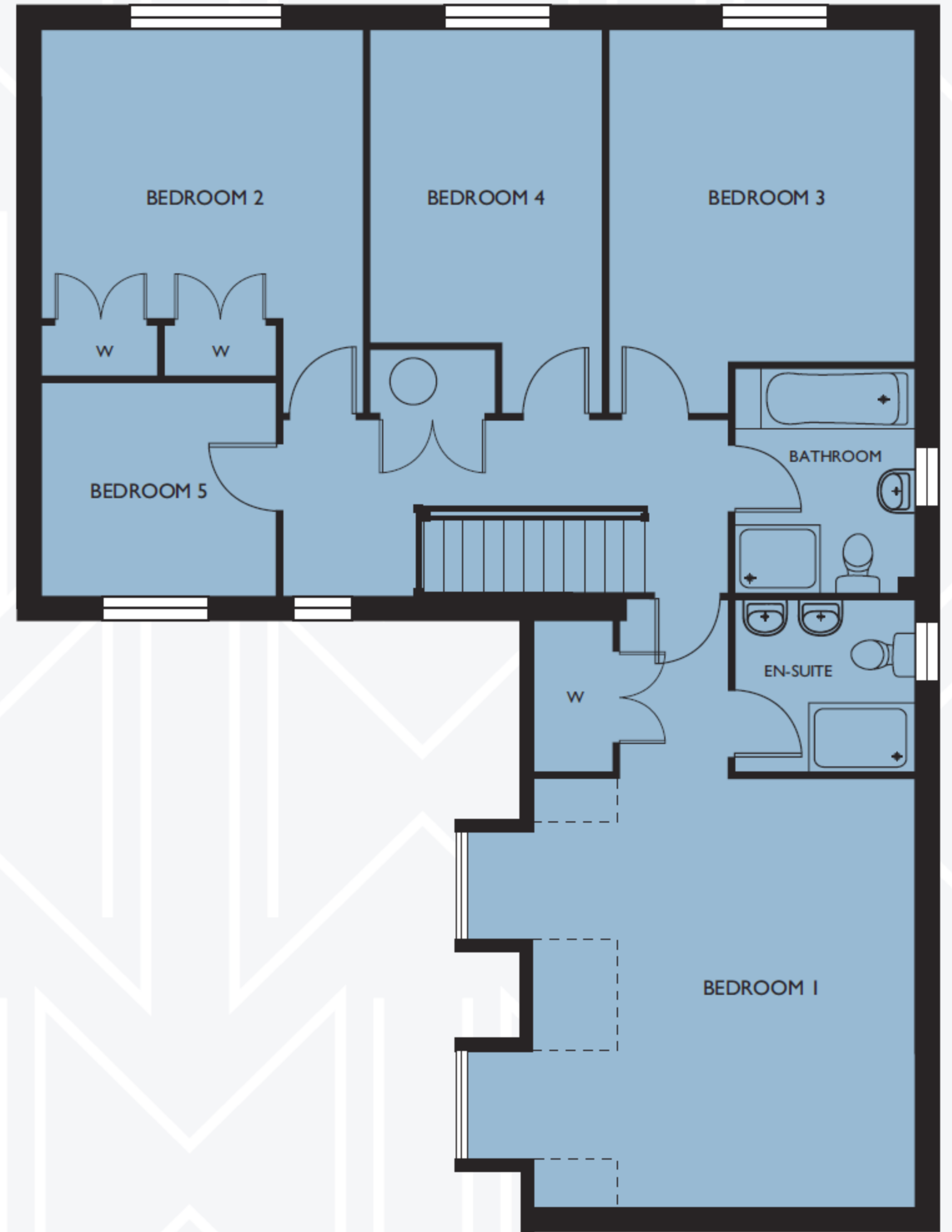


# GORING

Plots 19, 30 and 31



GROUND FLOOR



FIRST FLOOR

Living Room	6150 x 3775
Dining Room	4375 x 2900
Study	2600 x 2100
Kitchen/Breakfast	6250 (max) x 3200 (max)
Utility Room	2075 x 1875
Bedroom 1	5000 (min) x 4400 (+bay)
Bedroom 2	3725 x 3350 (min)
Bedroom 3	3875 (min) x 3550
Bedroom 4	3650 (min) x 2700
Bedroom 5	2700 x 2450

20'2" x 12'5"
14'4" x 9'6"
8'6" x 6'11"
20'6" (max) x 10'6" (max)
6'10" x 6'2"
16'5" (min) x 14'5" (+bay)
12'3" x 11'0" (min)
12'9" (min) x 11'8"
12'0" (min) x 8'10"
8'10" x 8'0"

Note: Plot 30 has brick elevation.