

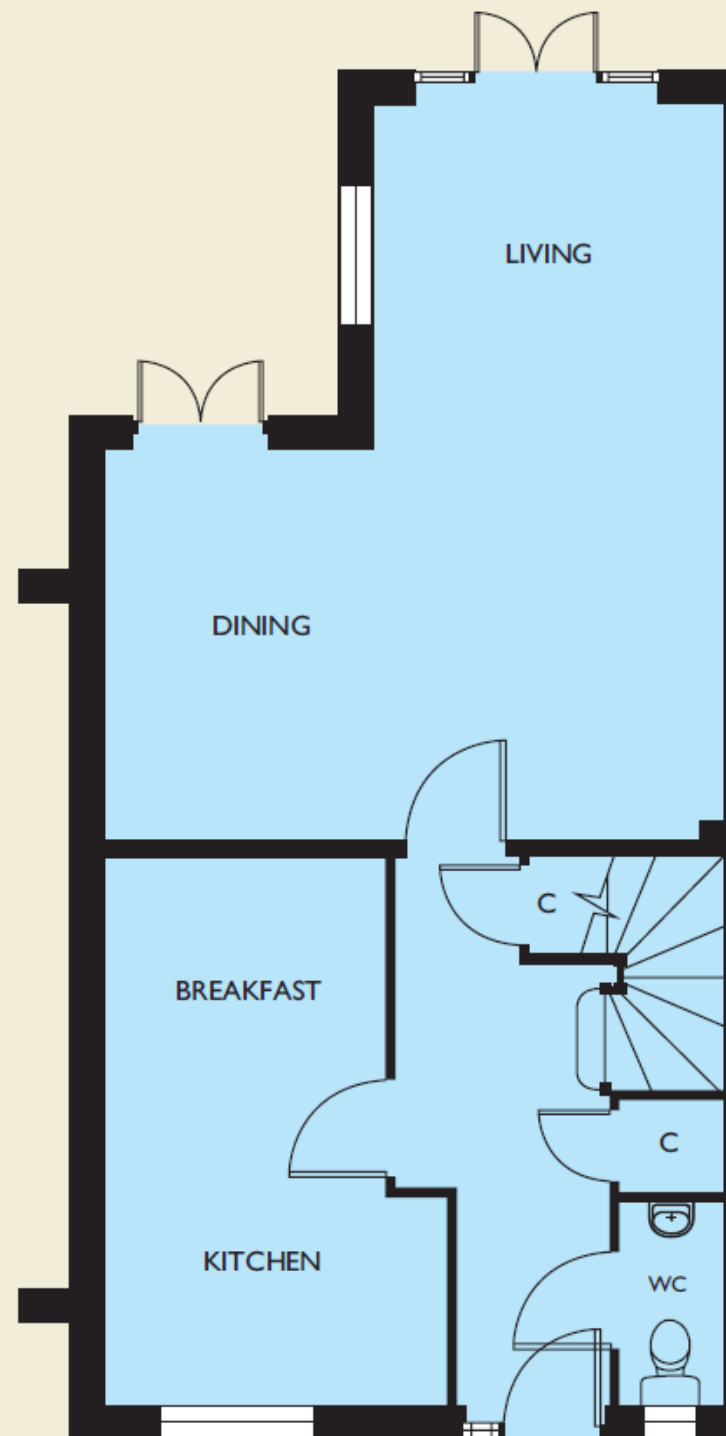
# Mowbray

Plots 36, 37, 38, 39, 40, 41, 71, 72, 73, 74, 90,  
91, 92, 93, 116, 117, 137, 138, 139, 140

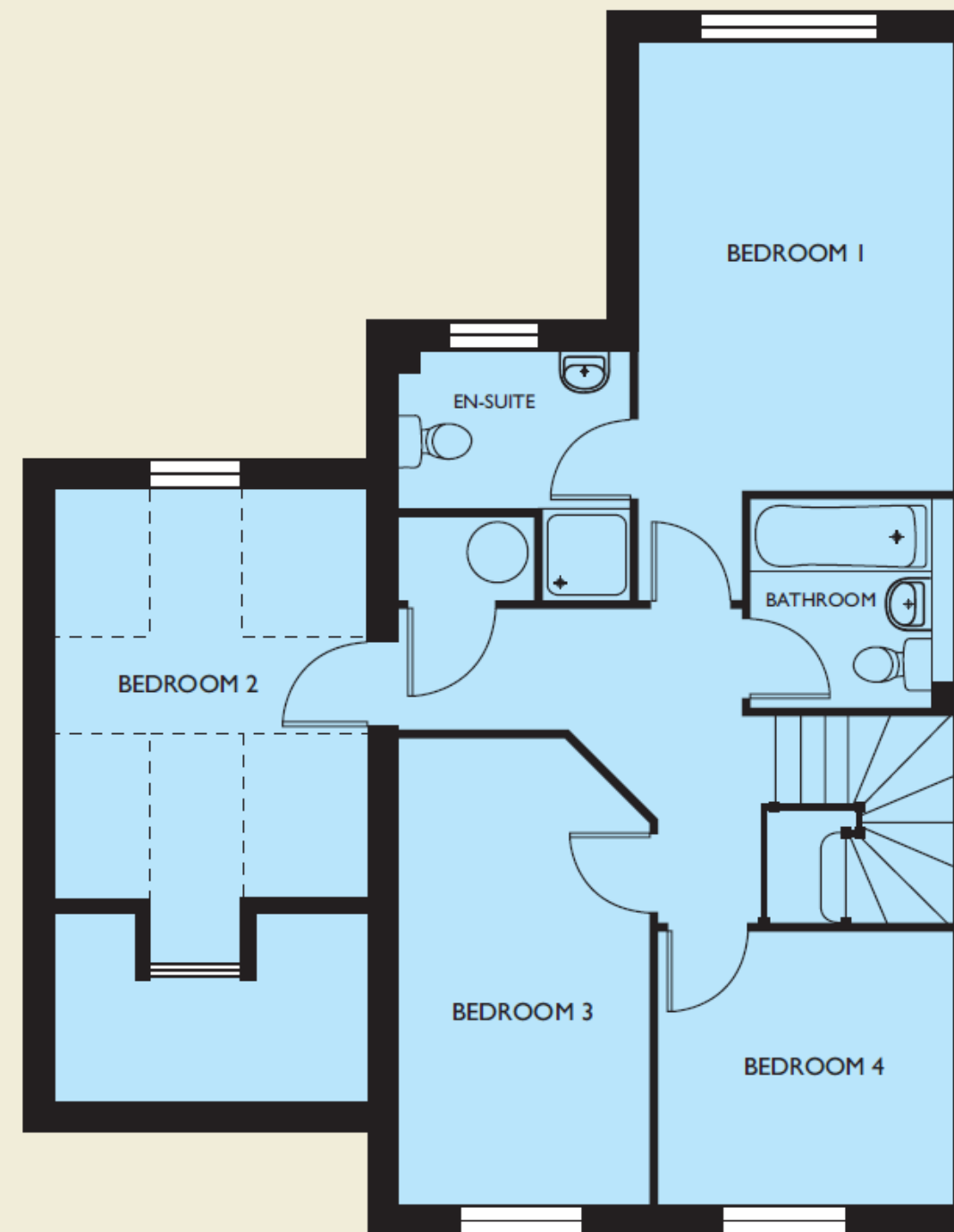
Kitchen / Breakfast	4775 x 2450	15'8" x 8'0"
Dining Area	3400 x 2000	11'2" x 6'7"
Living Area	6450 x 3325	21'2" x 10'11"
Bedroom 1	4375 (min) x 3025	14'4" (min) x 9'11"
Bedroom 2	4000 (min) x 3025	13'1" (min) x 9'11"
Bedroom 3	4550 (max) x 2450	14'11" (max) x 8'0"
Bedroom 4	2650 x 2850	8'8" x 9'4"



CARPOT/  
DRIVE THROUGH



GROUND FLOOR



FIRST FLOOR