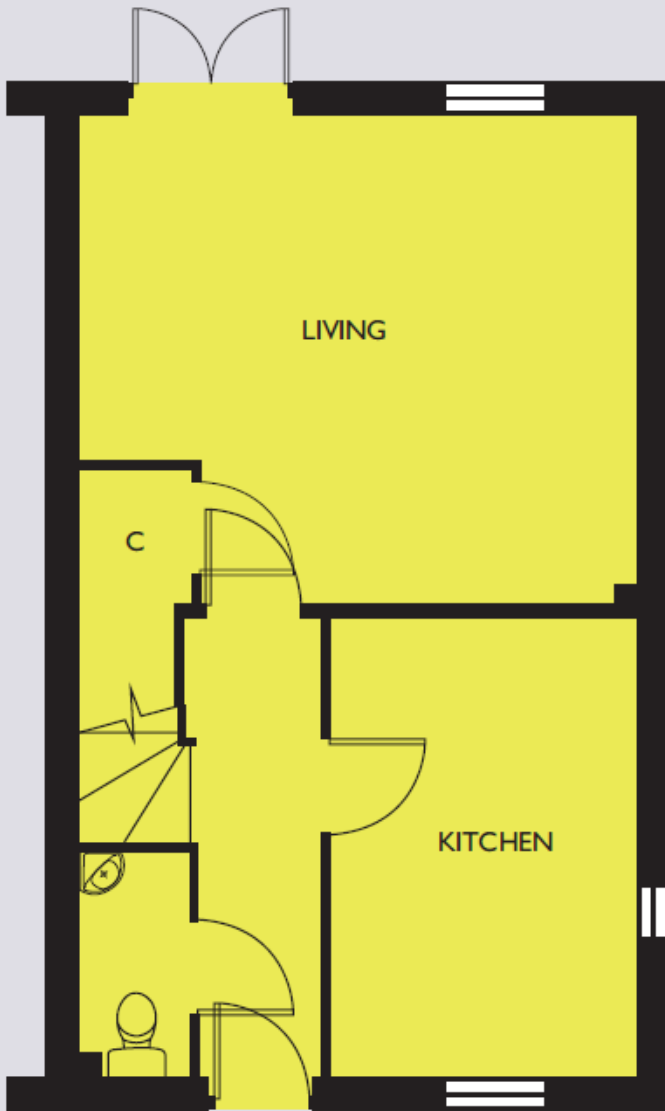
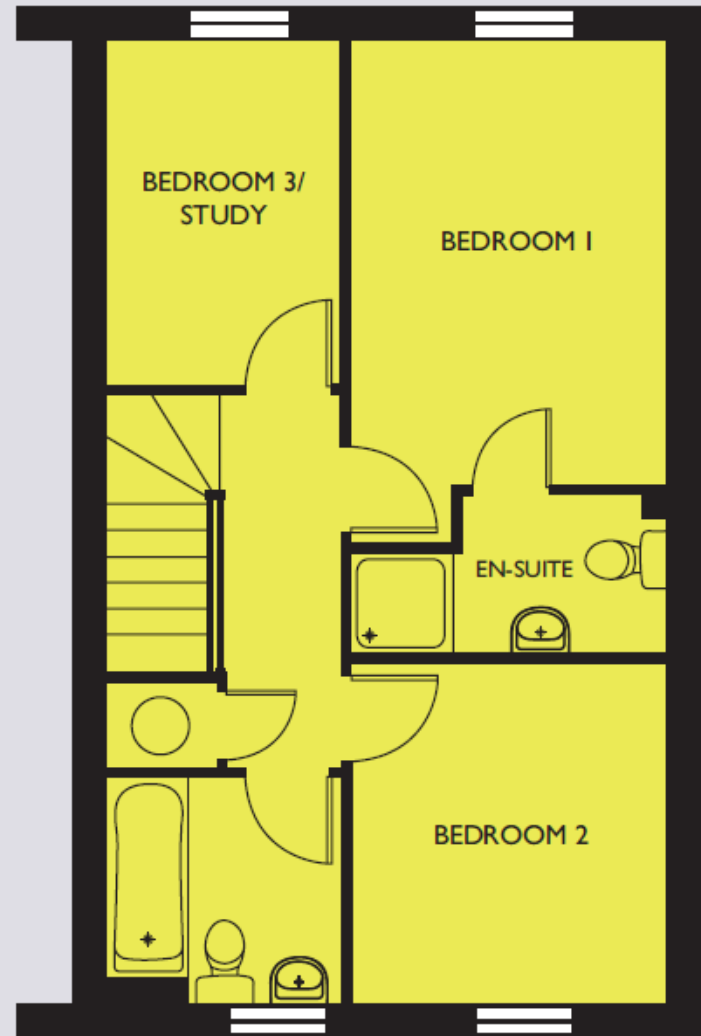


EYNESHAM

Plots 6, 7, 11, 12, 49, 50, 51 & 52



GROUND FLOOR



FIRST FLOOR

Living Room	4900 (max) x 4300 (max)	16'1" (max) x 14'1" (max)
Kitchen	4050 x 2700	13'3" x 8'10"
Bedroom 1	3925 x 2750	12'11" x 9'0"
Bedroom 2	2975 x 2750	9'9" x 9'0"
Bedroom 3	3025 x 2050	9'11" x 6'9"